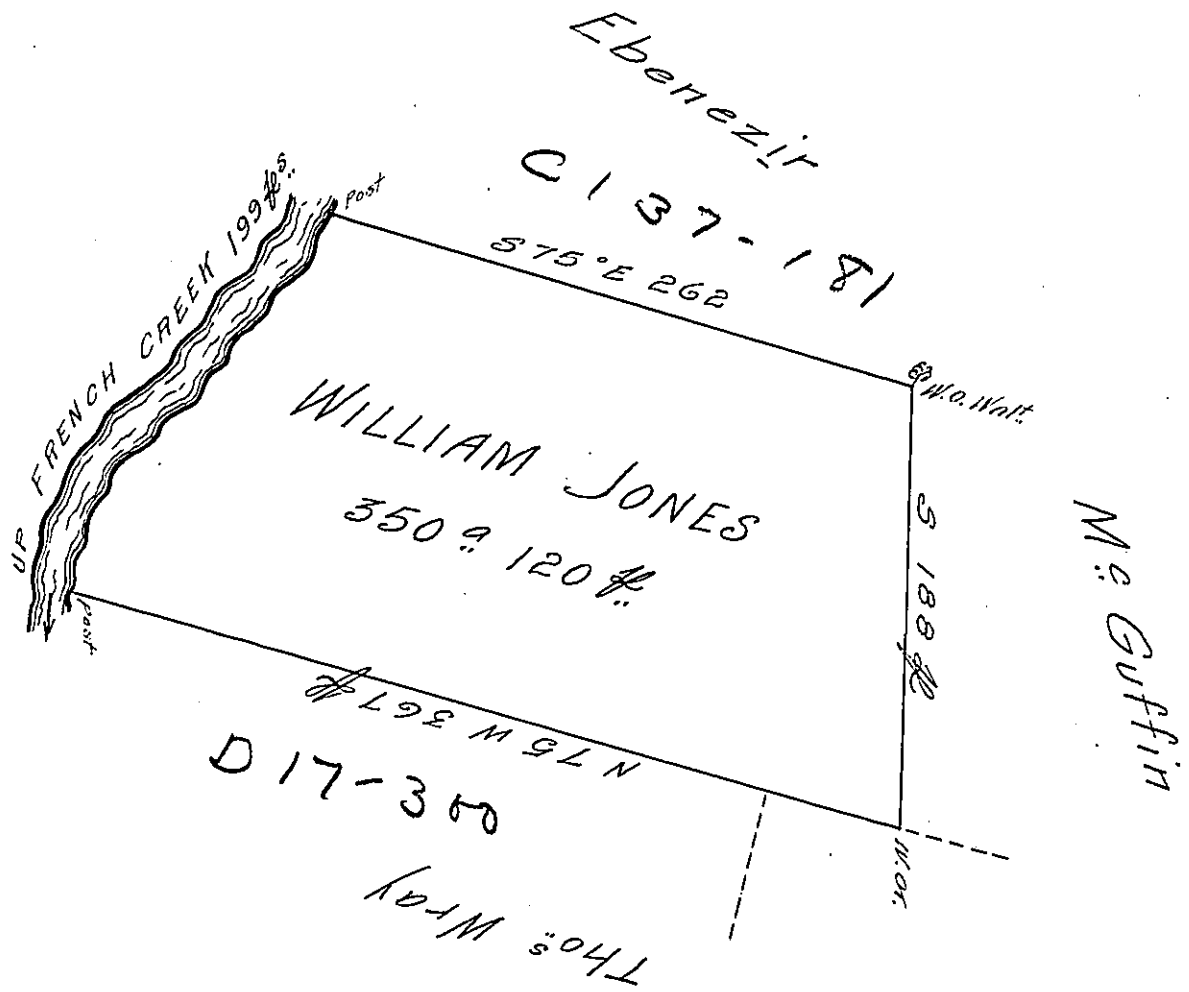


River Courses

- N 12° E 39
 - N 23° E 17
 - N 61° E 18
 - N 54° E 19
 - N 34½° E 46
 - N 60° E 37
 - N 24° E 23
- 199 #s



Situate on the East Side of and adjoining French Creek in All^y. County Containing 350^a 120 # and allowance of Six # Cent for Roads &c. Surveyed the 16th Day of May 1794 In pursuance of his improvement Dated the 3^d day of April 1792

W^m Power D^y. Sr.

To Dan^l. Brodhead Esq^r.
Surveyor General

IN TESTIMONY that the above is a copy of the original remaining on file in the Department of Internal Affairs of Pennsylvania, made conformably to an Act of Assembly approved the 16th day of February, 1833, I have hereunto set my Hand and caused the Seal of said Department to be affixed at Harrisburg, this nineteenth day of September 1906

Goac B. Brown
Secretary of Internal Affairs.